

## WE'LL DO IT FOR YOU

Are you still searching for that elusive color that perfectly captures your vision? Look no further than our services. We take immense pride in our ability to match any color, even if it is not currently featured in our color charts.

Our ultimate goal is to bring your unique vision to life, and we will stop at nothing to make that a reality. Whether you're

seeking a bold and vibrant hue, or a subtle and nuanced shade, our team of experts will use their unmatched skill and expertise to match your precise specifications.

Trust us to bring your vision to life, and experience the unparalleled satisfaction that comes with seeing your vision come to fruition.



Your vision materialized.  
**ALUCOLUX**

**3A Composites Asia Pacific Pte. Ltd.**  
300 Beach Road  
#10-06 The Concourse  
Singapore 199555  
☎ (65) 6303 9750  
✉ sales@alucobond.com.sg  
🌐 www.alucobond.com.sg

**3A Composites India Pvt. Ltd.**  
39<sup>th</sup> Floor, Commerz III,  
International Business Park,  
Oberoi Garden City,  
Off Western Express Highway,  
Goregaon (East), Mumbai - 400 063  
☎ (91) 22 4256 4500  
✉ alucobond.india@3acomposites.com  
🌐 www.alucobond.in

**3A Composites USA**  
721 Jetton Street, Suite 325  
Davidson, NC 28036  
United States of America  
☎ (1) 800 626 3365  
✉ info.usa@3acomposites.com  
🌐 www.alucobondusa.com

**3A Composites Middle East (Branch)**  
Almas Tower, JLT  
P.O. Box: 343522  
Dubai, UAE  
☎ (97) 1 58 535 1721  
✉ basel.massis@3acomposites.com  
🌐 www.alucobond.com

**3A Composites GmbH**  
Alusingenplatz 1  
78224 Singen  
Germany  
☎ (49) 7731 941 2060  
✉ info@alucobond.com  
🌐 www.alucobond.com

**Alucobond Composites (Jiangsu) Ltd.**  
10 South Hehuan Road  
Zhonglou District  
Changzhou, China - 213023  
☎ (86) 519 8166 5766  
✉ alucobond.china@3acomposites.com  
🌐 www.alucobond.com.cn



# ALUCOLUX<sup>®</sup>

## WORLD OF COLOURS

Outstanding quality colours and surfaces



DIGITAL/MAR2020/SEA

## ADD SOME SPICE

These colors have truly earned unwavering admiration with their unrivalled versatility and remarkable dependability in a diverse array of settings. With an impressive range of vibrant, metallic and solid options at your fingertips, these hues form the bedrock of any successful color scheme.

Vibrant colors can be used to craft a unique appearance that evokes a range of emotions and reactions. Imagine the daring and audacious effect of Lemon, the electrifying and vibrant display of Red, or the mesmerizing and enchanting allure of Intense Blue. In contrast, metallic colors offer a tantalizing array of captivating visual effects that transform under varying

lighting conditions and viewing angles, elevating your building to new heights of brilliance and radiance. Solid colors exude a refined and subtle elegance, imbuing your building with a sense of timelessness and sophistication.

These options have been rigorously tested and proven to be a resounding success, leaving a lasting impression on both users and passers-by alike. Rest assured that whether you opt for vibrant, metallic or solid colors, you can bask in the confidence that these colors will leave a significant impact on your building's appearance.

## VIBRANT COLOURS



Ruby | 8202

Orange | 8210

Emerald green | 691

Navy blue | 8336



Red | 8201

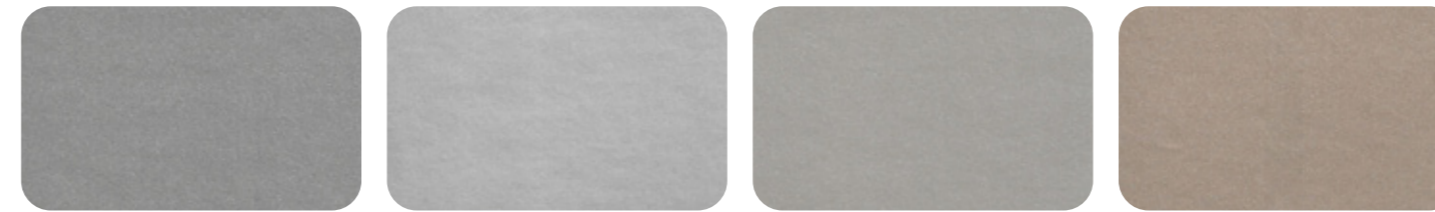
Lemon | 8200

Lime | 8313

Intense blue | 8191

N.B: Colours and patterns shown here may differ slightly with that on the actual panels

## METALLIC COLOURS



Smoke silver metallic | 501

Silver metallic | 500

Champagne metallic | 503

Grey metallic | 502

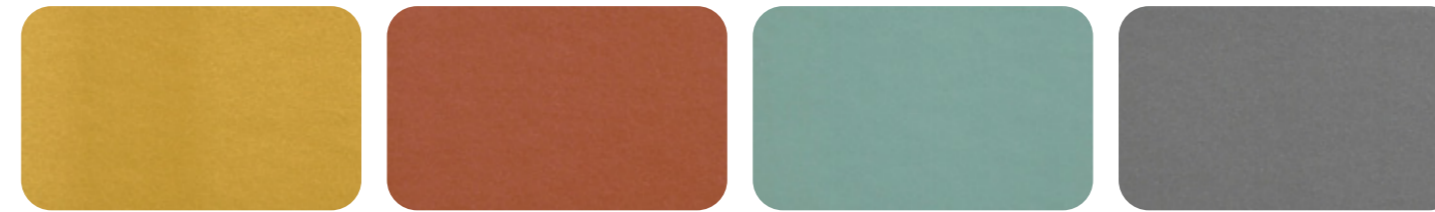


Grey blue metallic | 603

Sunrise silver metallic | 600

Brilliant metallic | 602

Bronze metallic | 504

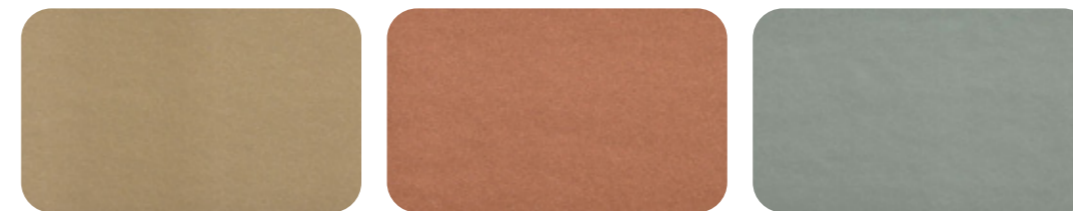


Daytona gold | 8703

Nevada copper | 8705

Jade green metallic | 9329

Classic bronze metallic | 9604



Gold metallic | 601

Copper metallic | 8704

Seafoam green metallic | 604

N.B: Colours and patterns shown here may differ slightly with that on the actual panels

## SOLID COLOURS



Black | 326

Anthrazit grey | 105

Fashion grey | 460

Light grey | 104



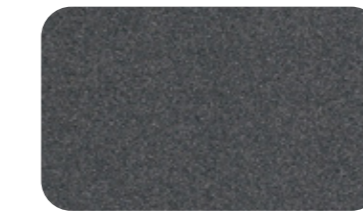
Beige | 103

Cream | 102

Pure white 10 | 100

White 16 | 101

## SOLID COLOURS



Dark grey metallic | 505

N.B: Colours and patterns shown here may differ slightly with that on the actual panels

### GENERAL INFORMATION

ALUCOLUX® features a multi-coat, multi-bake process on a continuous coil coating line using the highest grade of PVDF/FEVE paint system. The multiple layers are individually cured at temperatures of between 200-260 °C. The quality of the coating is tested according to standards established by E.C.C.A. (European Coil Coating Association) of which 3A Composites is a member. Fluorocarbon (PVDF) coating systems combine good formability and excellent surface durability. They are extremely resistant to weathering, strong solar radiation and pollution. The colour reproduction in this chart is subject to printing limitations. For exact colour matching, request actual colour samples.

The standard gloss for colours is between 30% - 40% according to Gardner Scale.

Minimum order quantities apply.  
For more information please refer to your nearest ALUCOLUX® representative or visit [www.alucolux.com](http://www.alucolux.com)

### ONLY FOR METALLIC COLOURS

To avoid possible reflection variations, it is recommended to install the panels in the same direction as marked on the protective peel-off-foil. Colour variations may occur between panels originating from different production batches. To ensure colour consistency, the total requirement for a project must be placed in one order.